

CHS - Bio



1955



Current

Carolyn Eads Miss Republican

I graduated from O.U. in 1960 with a Bachelor of Business Administration degree, went to Europe with Paula Capps, started to work for IBM in Okla City. There I met my husband Pat. We were transferred to St. Louis, where I worked for Monsanto Chemical Company in the Market Analysis and Research department. We lived there over 41 years (minus short moves to Oklahoma City and Denver) We retired and moved back to Tulsa. Our 3 children, Micki, Pat, and Molly are married and we have 6 grandchildren, 4 boys and 2 girls.



In St. Louis, I sold real estate for 31 years, was active in Republican politics, the Presbyterian church, Delta Gamma Alums and DAR. I loved St. Louis. After all, the Eads Bridge is there spanning the Mississippi River. We love being closer to our Lake House at Grand Lake where the children like to meet also. We love to travel in the USA and play golf.

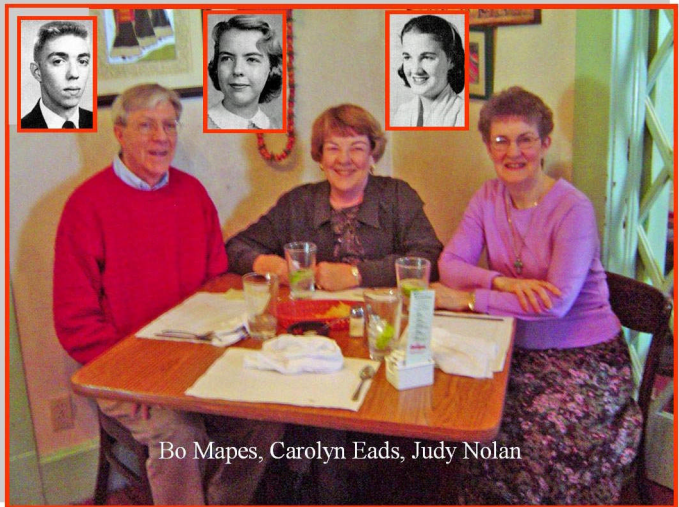
Carolyn at Reunion Meeting

Carolyn as a Member of Carmarata and the Tom Tom Staff

SEE YOU AT THE REUNION.

By Fred Benford – Carolyn is modest. She is an interregnal part of the CHS reunion committee. Carolyn was on the Tom Tom Staff, in Student Council, Camarata club, and played piano with Sue Livesay, John Touhey and Kent Shacklett (2 pianos, 4 people) in the Daze. Down for MORE!

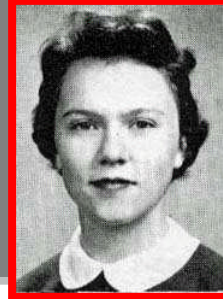
Carolyn visiting with Bo Mapes and his wife Judy Nolan



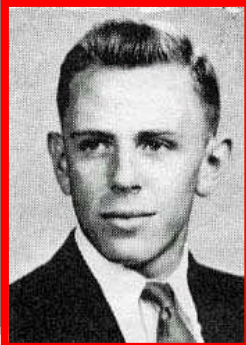
Bo Mapes, Carolyn Eads, Judy Nolan

With prodding, Carolyn added a few more tidbits of info:

*“One of my hobbies is quilting. I love snow skiing, but my knees don't allow that anymore. I dated **Bobby Houston**. Best friends: lots, but mainly **Paula Capps, Susy Baldwin and Betsy Martin**. I went to Europe right after graduation, started work with IBM in Jan, 1961, Married July 1961. My Republican activities included Precinct captain and campaign manager for some local elections, and Republican Woman's Club.”*



**Carolyn's best buddies:
Suzy Baldwin,
Paula Capps &
Betsy Martin**



Bobby Houston